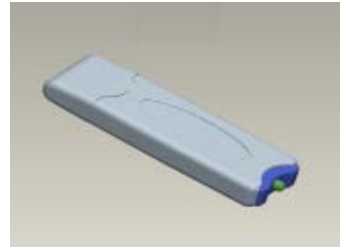


Order Information: WUB1700S

Wireless-G USB 2.0 Mini External Security Mini Adapter



Features

WUB1700S-A3

- Connects at a full 54Mbps via USB 2.0, up to 8 times faster than a USB 1.1 adapter
- Compact size for greater flexibility
- Also compatible with USB 1.1 desktop and notebook computers
- Plug-and-Play Compatible with windows 98SE, 2000, Millennium, and XP/XP64/VistaX86/VistaX64
- Security : WEP 64/128 bits , WPA: TKIP/802.11i compliant AES encryption
- Support Set Wizard to do quickly configuration
- RTS & Fragment Threshold support
- Power Save & Turbo Mode
- WOL(Wake On Lan) Support
- Software AP function support on Vista, XP,Mac

【WUB1700S】 Electrical Specifications	
Interface	USB 2.0 Standard, USB 1.1 Compliant
Standards Conformance	IEEE802.11 / 802.11b / 802.11g, ARIB STD-T66 compliant
Data Transfer Rate	IEEE802.11b : 1 / 2 / 5.5 / 11Mbps (auto sensing) IEEE802.11g : 6 / 9 / 12 / 18 / 24 / 36 / 48 / 54Mbps (auto sensing)
Access Method	Infrastructure Mode, Ad-Hoc Mode (802.11 Ad-Hoc), Roaming
Security	WEP 64/128bit, TKIP, WPA, 802.11i,compliant AES encryption
Quality of Service (QOS)	802.11e
Software AP on WinXP	Power Saving & WMM support Hardware –WEP (64 and 128 bit) /WPA/WPA2 MAC address filter(Access or Reject list) Support ICS setting on-WinXP



LanReady Technologies Inc.

3F., No.166, Sinhu 2nd Rd., Neihu District, Taipei City 114, Taiwan
 Tel: 886-2-2796-8188 Fax: 886-2-2796-8158 <http://www.lanready.com>

Network on Demand Network on Demand Network on Demand Network on Demand Network on Demand

International Regulation	802.11d
Frequency Range	IEEE802.11b : 2.4 to 2.497GHz IEEE802.11g : 2.4 to 2.4835GHz
Wireless Medium	OFDM & DSSS (with Barker coding and CCK for backward compatibility with 802.11b)
Media Access Protocol	CSMA / CA
Modulation Method	IEEE802.11b : DBPSK (1Mbps), DQPSK (2Mbps), CCK (5.5/11Mbps) IEEE802.11g : BPSK (6/9Mbps), QPSK (12/18Mbps), 16-QAM (24/36Mbps), 64QAM (48/54Mbps)
Operating Channels	1~11 (U.S. & Canada), 1~13 (channel availability depends on local regulations)
Transmit Power Settings	16dBm (OFDM) / 18dBm (CCK)
Receiver Sensitivity	1 Mbps : -88dBm 2 Mbps : -83dBm 5.5 Mbps : -79dBm 11 Mbps : -70dBm 12 Mbps : -76dBm 24 Mbps : -71dBm 36 Mbps : -67dBm 54 Mbps : -62dBm
Internal Antenna Type	Built-in Chip Antenna
LED Indicators	Power / Link
Power Consumption	-Power Save mode = 95mA -Standby mode = 2mA -Transmit mode = 400mA -Receive Mode = 100mA
Operating systems	Windows XP, Windows2000, Windows ME, 98SE, Linux
Environmental & Mechanical Characteristics	
Operating Temperature	32 °F ~ 131 °F (0 °C ~ 55 °C)
Storage Temperature	-13 °F ~ 158 °F (-20 °C ~ 70 °C)
Operating Humidity	10% to 80% Non-Condensing
Storage Humidity	5% to 90% Non-Condensing