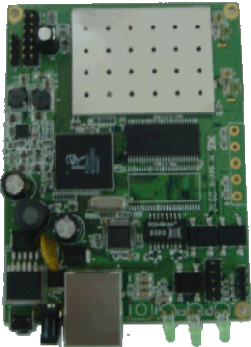


Model No : FN2-RTH2-R

Lanready Network Appliance – Support on board radio 5GHz , 200mW



FN2-RTH2-R is a fully-featured reference appliance for based on the Ralink 2880 MIPS-based (266MHz) WiFi network SoC, targeting small and medium business and embedded computing applications. FN2-RTH2-R enables rapid evaluation and development of converged “ solution in a box “ products – integrating High Power wireless CPE , outdoor bridge , enterprise-grade wireless access point .

Application :

- Outdoor/Indoor Long Range Point-To-Point Bridge
- Outdoor/Indoor Long Range Hot Spot
- Outdoor/Indoor Long Range CPE
- Outdoor/Indoor AP Bridge

Product Hardware Features

- 802.11n 2T2R (300Mbps PHY data rate)
- Transmitting Power : 23dBm
- Receiving : -97dBm
- 2 receivers and 2 transmitters
- 4.9-5.9GHz band
- 1x1/1x2/1x3/2x1/2x2 modes
- 20Mhz/40Mhz channel width
- Legacy and high throughput modes
- Multiple BSSID (up to 8)
- WEP64/128, WPA, WPA2 engines
- QOS-WMM ,WMM Power Save

Standard Software Highlights

- Operation Modes : Access Point, Bridge , Ethernet Converter
- WDS : Lazy/Bridge/Repeater
- Wireless Operation Mode : Mixed Mode/Green Field



LanReady Technologies Inc.

3F, No.166, Sinhu 2nd Rd., Neihu District, Taipei City 114, Taiwan, R.O.C.
TEL: (02) 2796 8188 FAX: (02) 2796 8158 ID:80408803

- Security : WPA/2-personal/WPA/2-enterprise
- OoS : WMM
- Over load current protection

Feature

Wireless Architecture Mode :

- AP/Bridge Mode
- Ethernet Converter Mode

Wireless Feature

- No of BSSID (Virtual AP) : 8
- No of WDS Setting : 4
- IEEE802.11f IAPP(Inter Access Point Protocol) , hand over users to another AP
- IEEE 802.11i Preauth (PMKSA Cache)
- IEEE 802.11h -Transmission Power Control
- IEEE 802.11d -Multi country roaming

Authentication/Encryption (Wireless Security)

- WPA-Personal / WPA-Enterprise
- WPA2-Personal /WPA-Enterprise
- Setting for “ Deny ANY “ connection request
- MAC Address filtering (MAC ACL)

Quality of Service

- IEEE802.11e WMM

Management

- Factory Default
- Configuration Restore and Backup
- System Reset
- Web Upgrade

Diagnostics

- Ping
- Syslog

Hardware Specifications

Hardware Specifications	
Base Platform	Ralink 2880 + 2850
Clock Speed	266 MHz
Wireless Radio	802.11 a /n
Serial Port	1 * Consol
Reset Switch Built-in	Push-button momentary contact switch
Standards Conformance	IEEE 802.3 / IEEE 802.3u

Ethernet Configuration	10/100BASE-TX auto-negotiation Ethernet port x 1 (RJ-45 connector) Auto MDI/MDI-X enabled ,Passive Power Over Ethernet Compatible
SDRAM	On board : 16 Mbytes (Max : 32Mbytes)
Flash	On board : 4 Mbytes (Max : 8Mbytes)
Built-In LED Indicators	1x Power , 1x LAN, 1 x WLAN
Wireless Specifications	
Network Standards Conformance	IEEE802.11 a/n (draft 2.0) compliant
Data Transfer Rate	IEEE802.11b : 1 / 2 / 5.5 / 11Mbps (auto sensing) IEEE802.11g : 6 / 9 / 12 / 18 / 24 / 36 / 48 / 54(auto sensing) IEEE802.11n : Draft 2.0
Frequency Range	A Mode: 5.15~5.35 & 5.725~ 5.825 GHz for US 4.9~5.25 GHz for Japan (Subject to change) 5.15~5.35 & 5.47~5.725 GHz for ETSI N Mode : 5.15~5.35 & 5.725~ 5.825 GHz for US 4.9~5.25 GHz for Japan (Subject to change) 5.15~5.35 & 5.47~5.725 GHz for ETSI
Channel Spacing	A Mode: 20MHz N Mode : 20/40MHz
Media Access Protocol	CSMA / CA with ACK
Modulation Method	A Mode: OFDM with BPSK, QPSK, QAM, and 64QAM N Mode: BPSK,QPSK,QPSK,16-QAM,64-QAM
Operating Channels	Channels Support: A Mode: US: 12 (Ch:36,40,44,48,52,56,60,64,149,153,157, 161) Japan: 4 (Ch:34,38,42,46)and 7(4.92, 4.94, 4.96,4.98, 5.04, 5.06, 5.08GHz) (Subject to change) ETSI:19(Ch:36,40,44,48,52,56,60,64,100,104,108, 112,116,120,124,128,132,136,140) N @ 5GHzMode: US: 12 (Ch:36,40,44,48,52,56,60,64,149,153,157, 161) Japan: 4 (Ch:34,38,42,46)and 7(4.92, 4.94, 4.96,4.98, 5.04, 5.06, 5.08GHz) (Subject to change) ETSI:19(Ch:36,40,44,48,52,56,60,64,100,104,108, 112,116,120,124,128,132,136,140)
RF Output Power	200mW
Transmit Power	23 dBm

Variation	
Frequency Response flatness	±1dB over operating range
Receiver Sensitivity	-97dBm
Environmental & Mechanical Characteristics	
Operating Temperature	-20 °C ~ 60 °C
Storage Temperature	-20 °C ~ 70 °C
Operating Humidity	10% to 80% Non-Condensing
Storage Humidity	5% to 90% Non-Condensing
Antenna Connector	2 * IPEX Reverse -Type Connector (MMCX Connector optional)
Power Consumption	9W
Overload Current Protection	1.1A
Input Power	12-68 VDC
Connector	DC-In Jack , RJ 45 (Power Over Ethernet)
Power Supply	AC Input : 110 – 220V AC Power DC Output : 12 VDC, 1.5A input
Board Dimensions	74 x110 (mm) (Width x Depth)